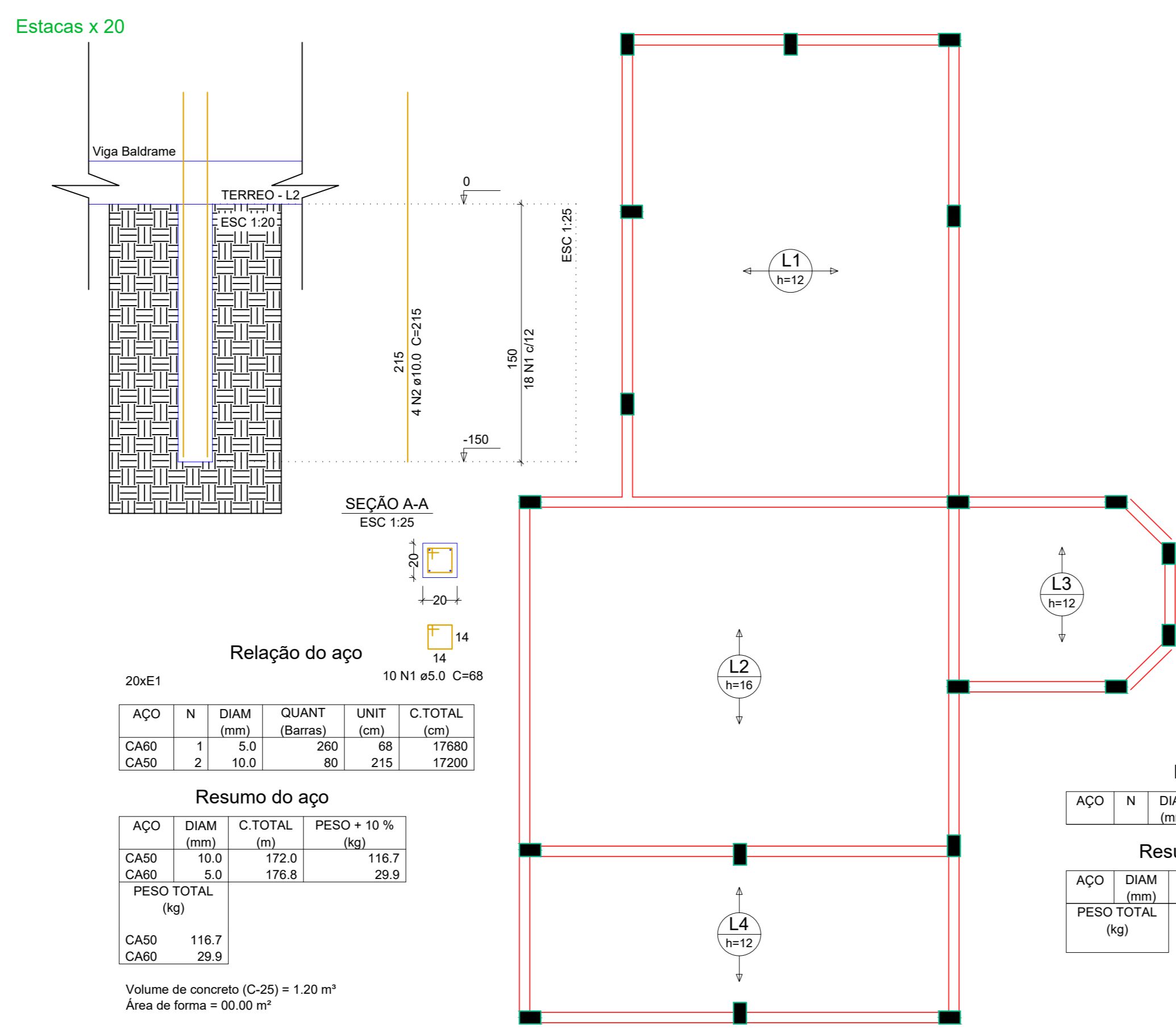
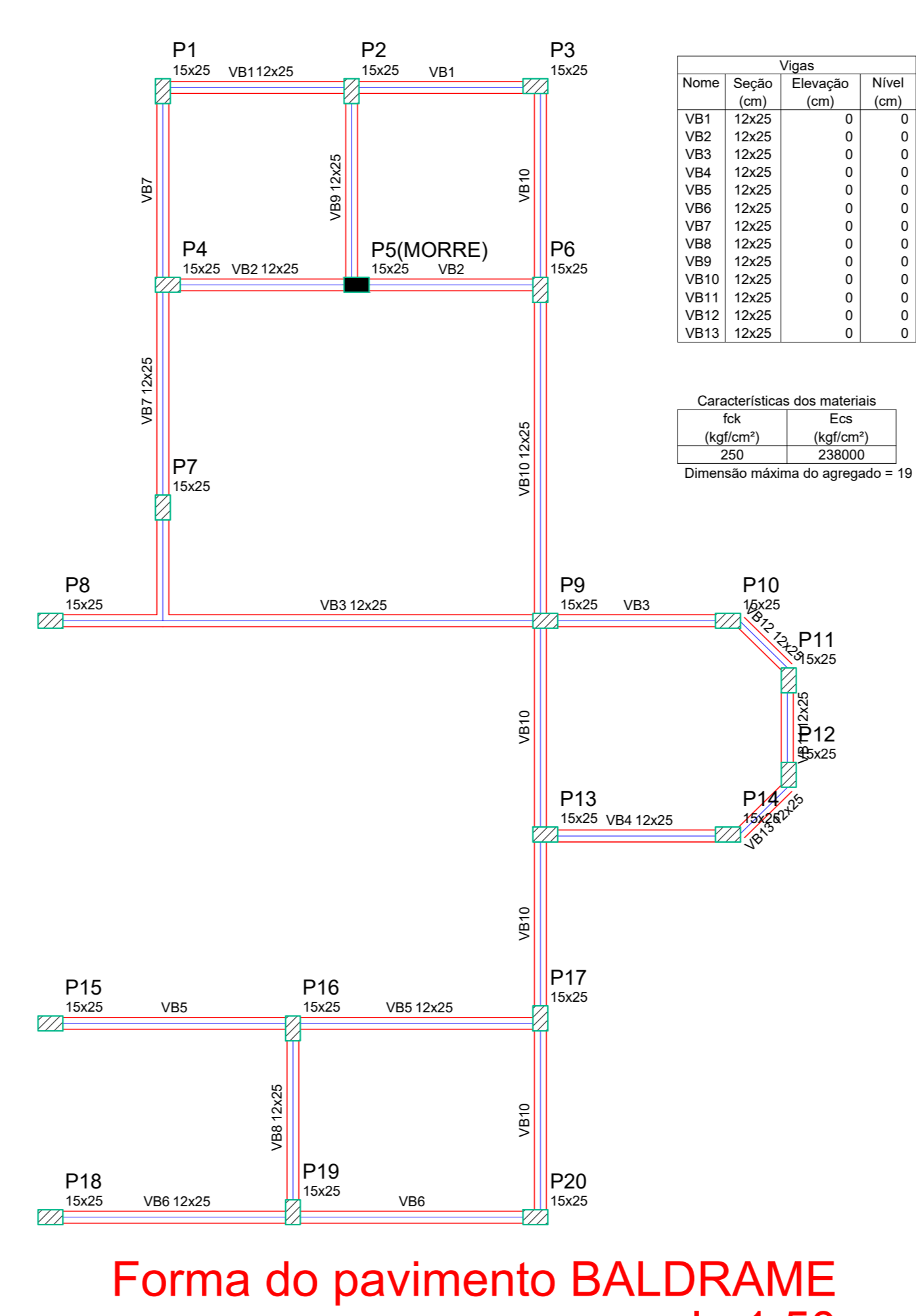


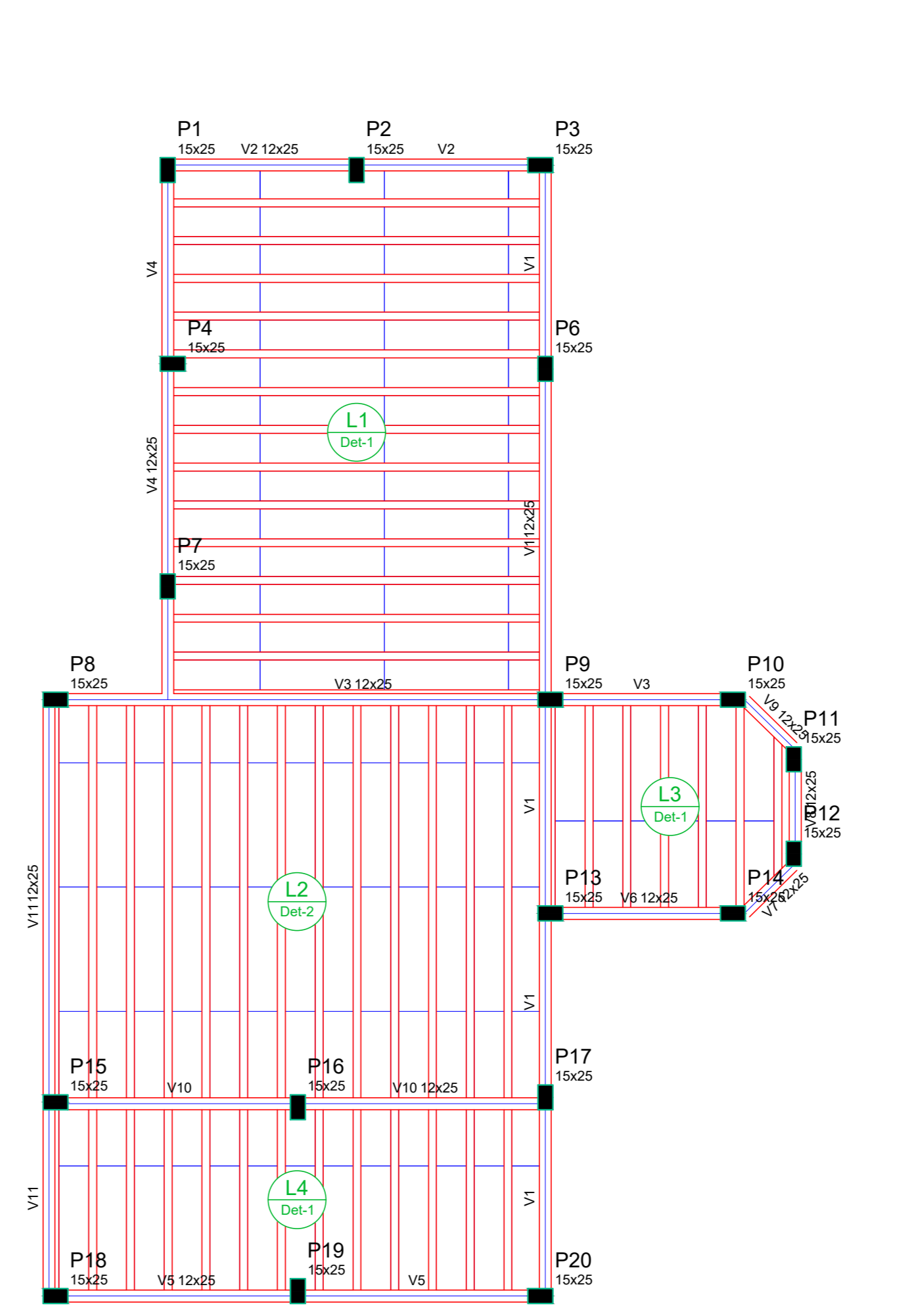
Nome	Seção	X (cm)	Y (cm)	Carga Max (kN)	Carga Min (kN)	Mx (kgf.m)	My (kgf.m)	Fx (kN)	Fy (kN)	Estaca	em (cm)
P1	15x25	5442.60	1240.50	1.2	0.7	200	100	0.1	0.2	R20	-150
P2	15x25	5832.60	1240.50	0.9	0.7	100	100	0.2	0.1	R20	-150
P3	15x25	5817.60	1245.50	1.1	0.5	100	200	0.1	0.1	R20	-150
P4	15x25	5447.60	1045.50	1.8	1.3	100	100	0.1	0.2	R20	-150
P5	15x25	5817.60	1045.50	0.4	0.3	100	100	0.2	0.2	R20	-150
P6	15x25	5822.60	1040.50	2.6	1.9	100	100	0.1	0.1	R20	-150
P7	15x25	5442.60	821.50	2.9	2.0	200	100	0.1	0.1	R20	-150
P8	15x25	5329.50	707.50	2.9	2.9	200	200	0.2	0.1	R20	-150
P9	15x25	5827.60	707.50	4.4	3.0	100	200	0.4	0.1	R20	-150
P10	15x25	6011.40	707.50	0.8	0.2	100	200	0.3	0.1	R20	-150
P11	15x25	6072.60	647.50	1.0	0.1	100	100	0.1	0.2	R20	-150
P12	15x25	6072.60	552.50	1.1	0.1	100	100	0.1	0.2	R20	-150
P13	15x25	6011.40	492.50	1.2	0.6	100	200	0.2	0.1	R20	-150
P14	15x25	6011.40	492.50	1.2	0.6	100	200	0.2	0.1	R20	-150
P15	15x25	5329.50	302.50	2.0	1.4	100	200	0.2	0.1	R20	-150
P16	15x25	5817.60	297.50	3.2	2.3	100	100	0.2	0.1	R20	-150
P17	15x25	5822.60	307.50	1.7	1.3	200	100	0.2	0.1	R20	-150
P18	15x25	5329.50	107.50	1.0	0.7	100	200	0.1	0.1	R20	-150
P19	15x25	5573.55	112.50	1.0	1.2	200	100	0.2	0.2	R20	-150
P20	15x25	5817.60	107.50	1.2	0.7	100	200	0.1	0.1	R20	-150



Armação positiva das lajes do pavimento TERREO escala 1:50

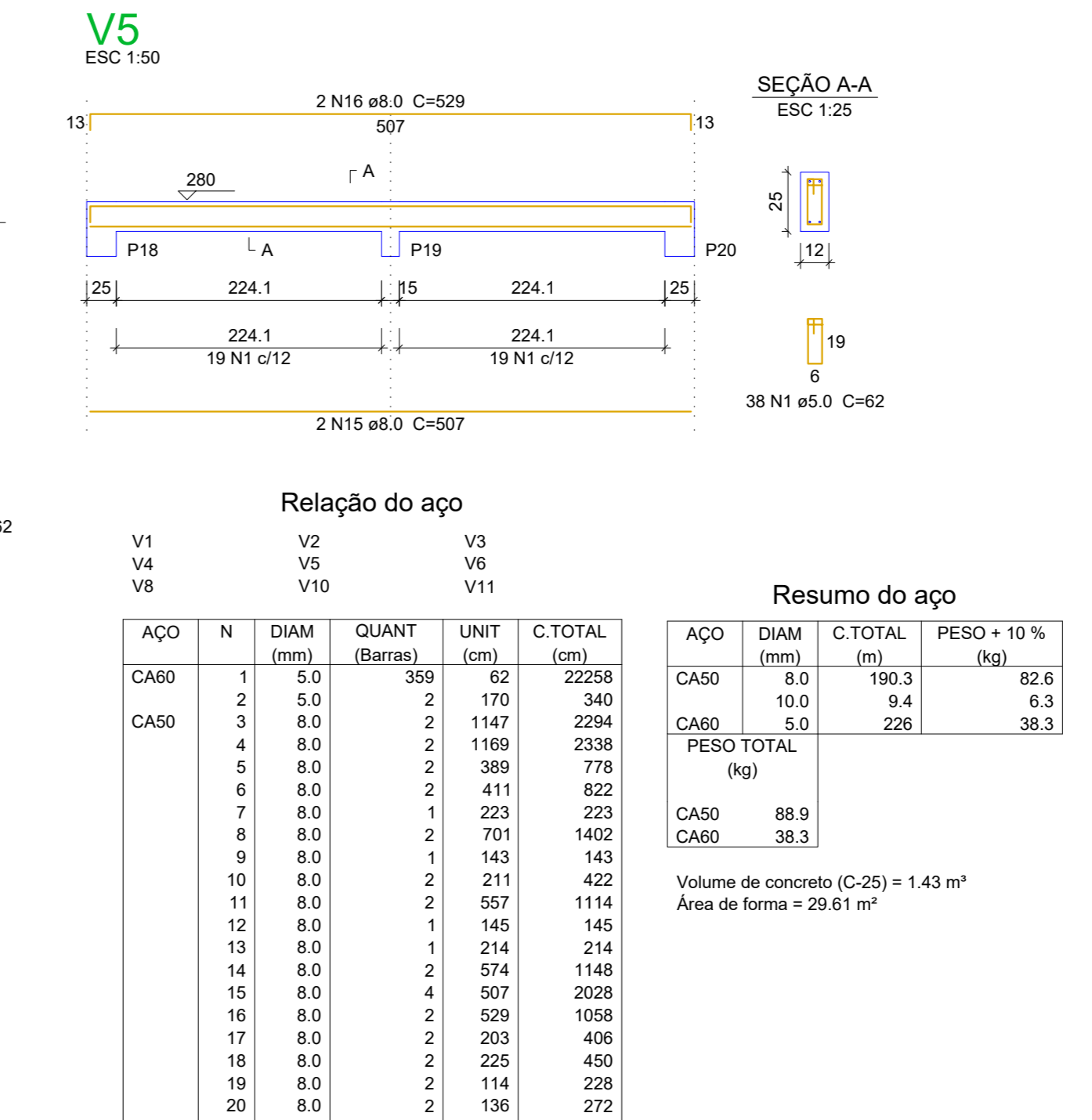
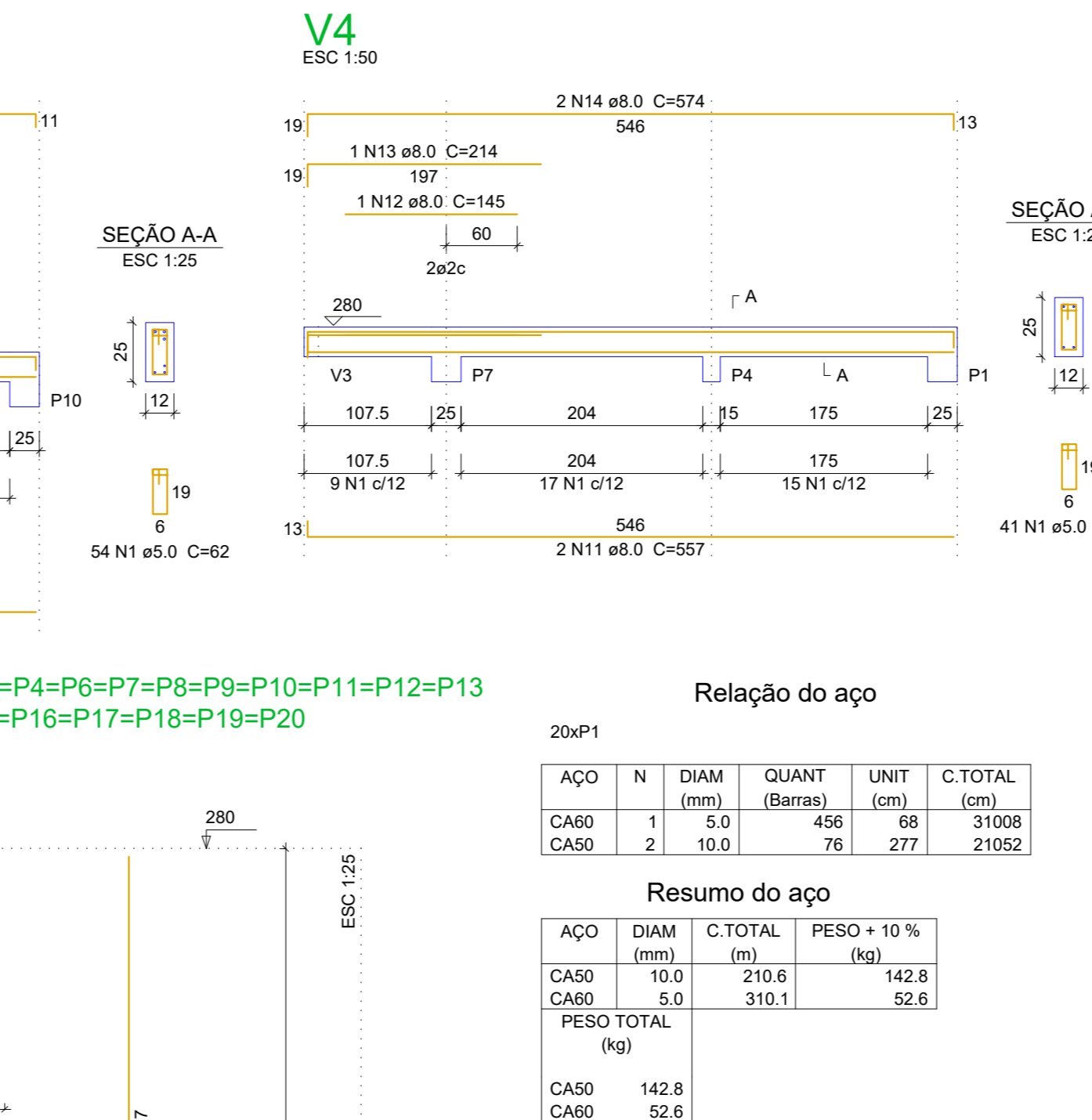
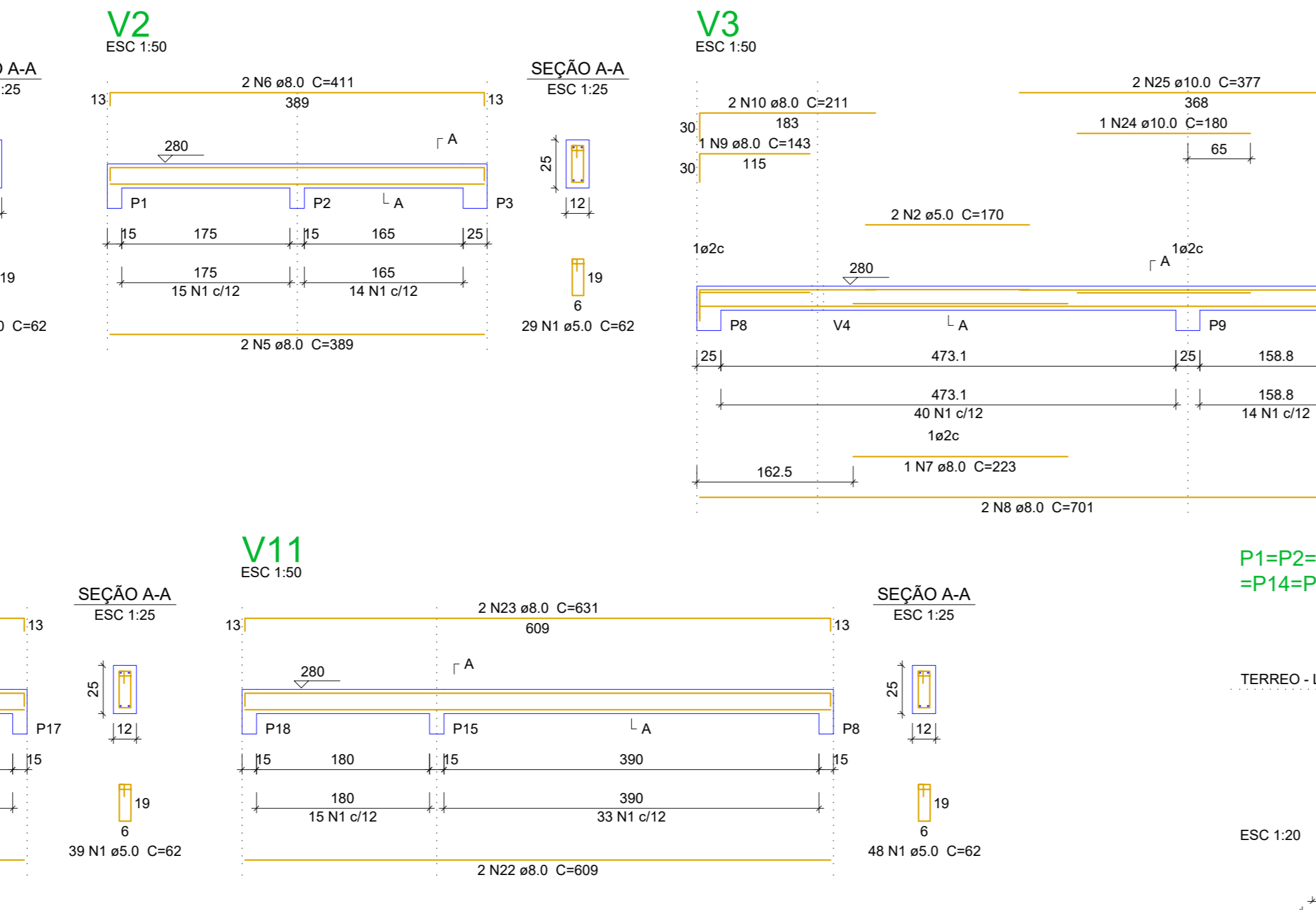
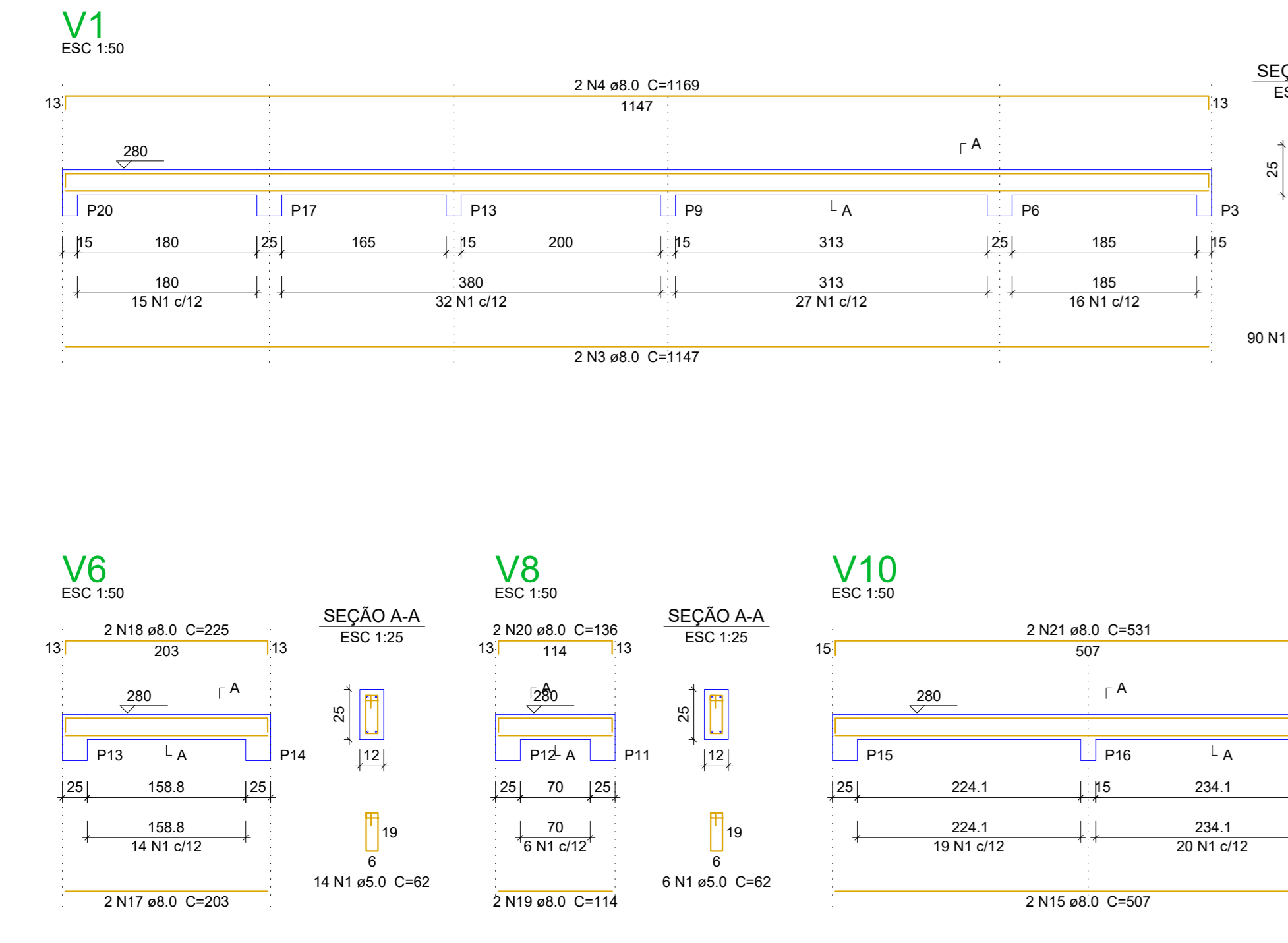
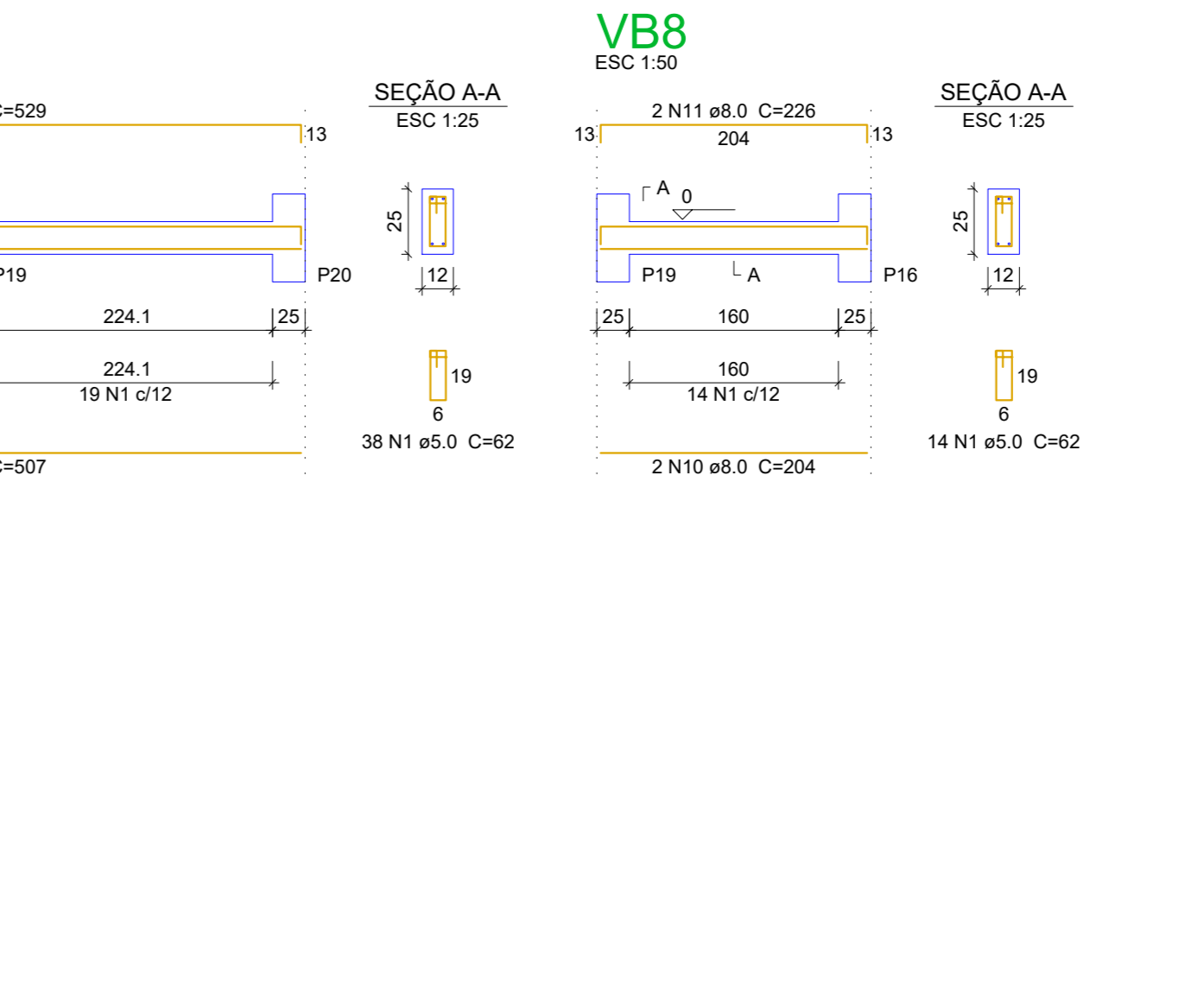
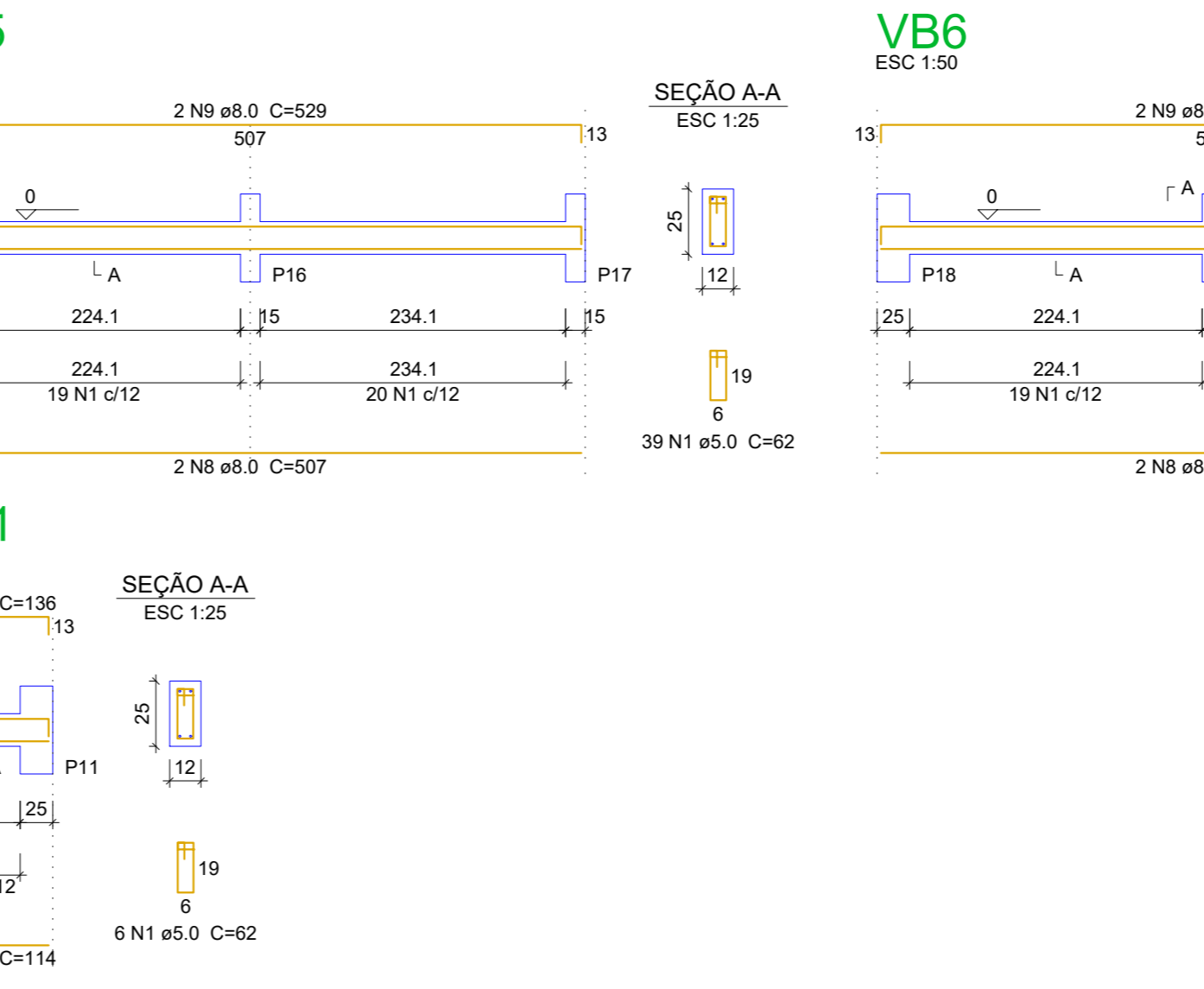
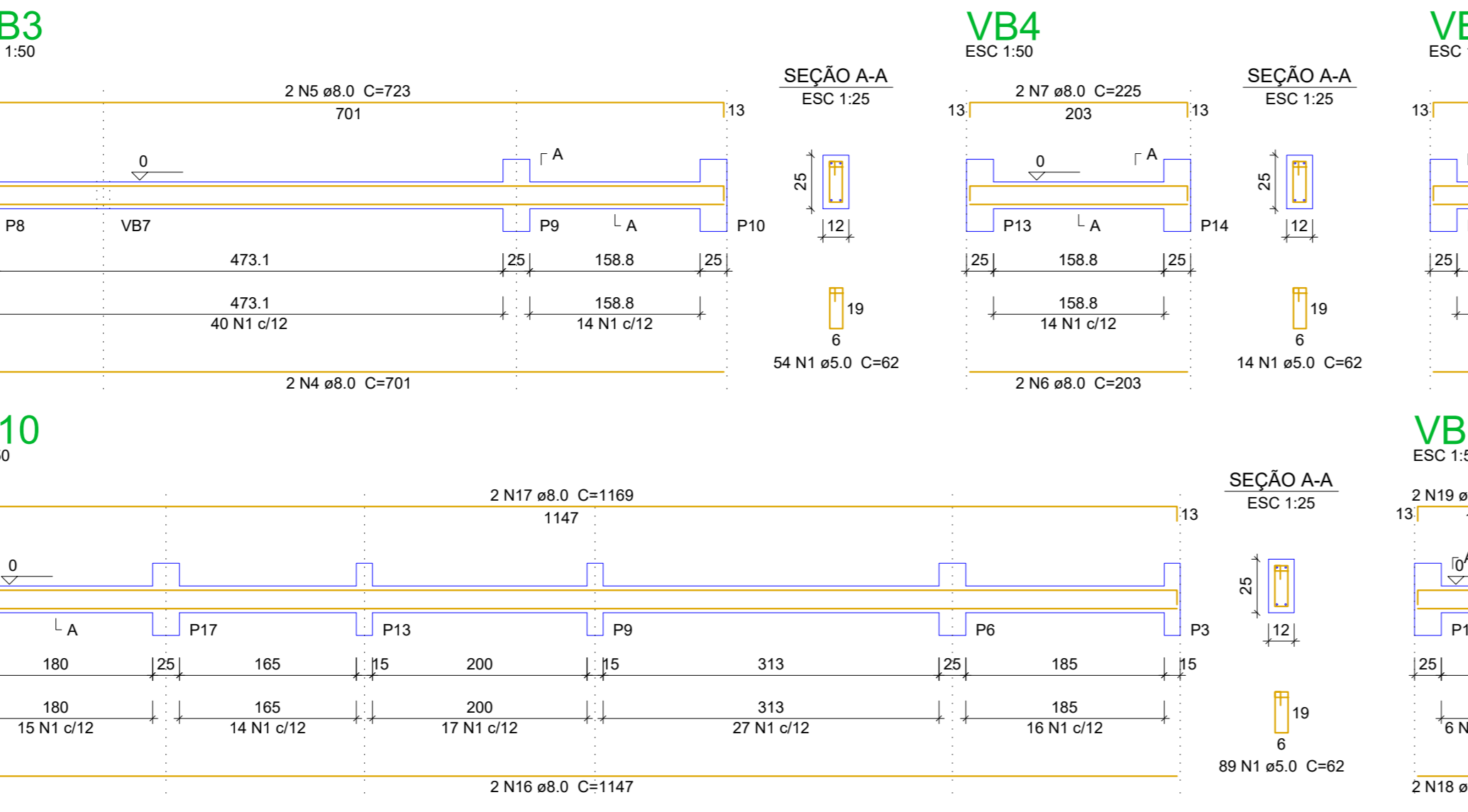
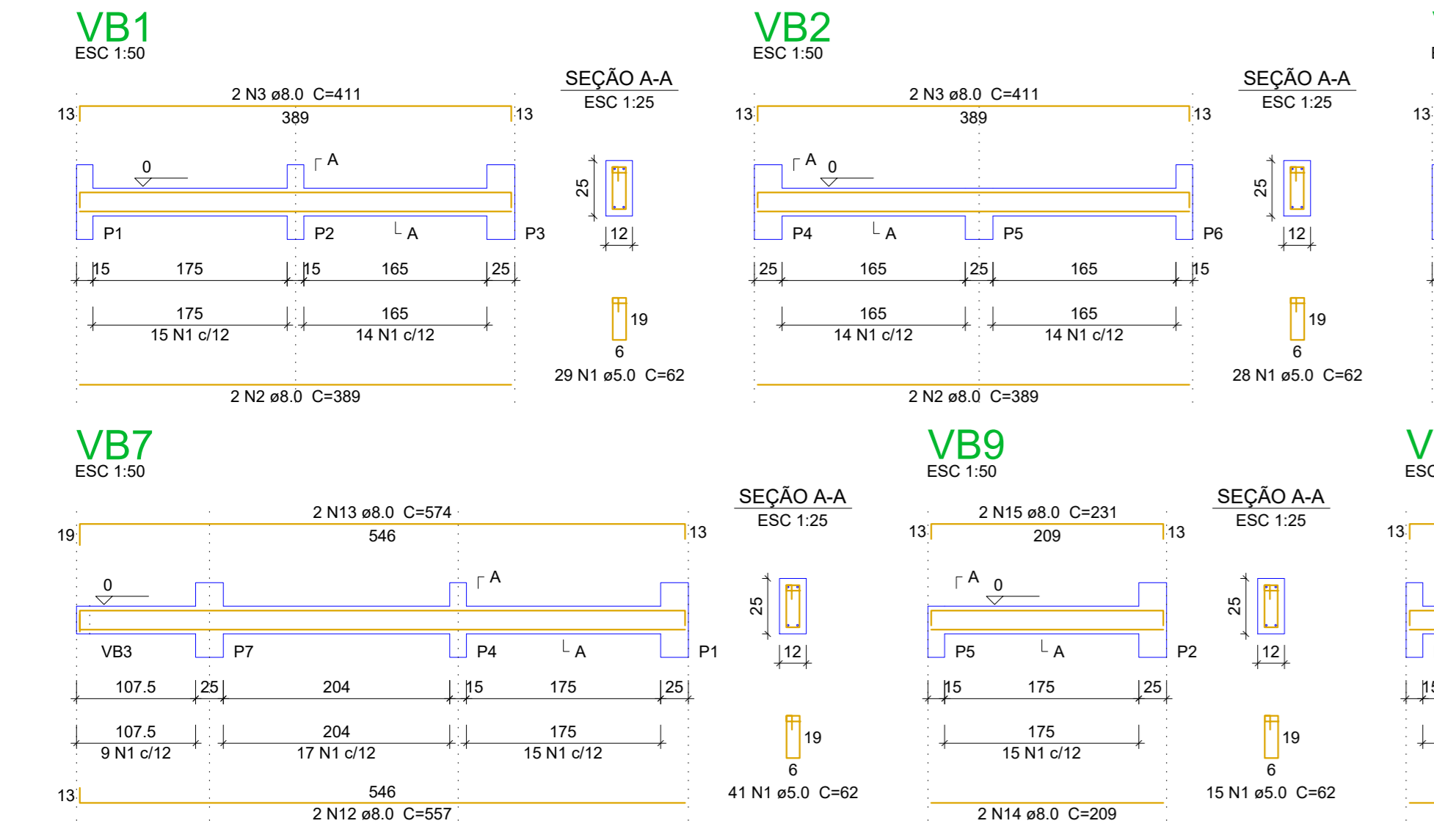


Forma do pavimento BALDRAME escala 1:50



Forma do pavimento TERREO escala 1:50

Nome	Seção	Elevação (cm)	Nível (cm)
V1	12x25	0	280
V2	12x25	0	280
V3	12x25	0	280
V4	12x25	0	280
V5	12x25	0	280
V6	12x25	0	280
V7	12x25	0	280
V8	12x25	0	280
V9	12x25	0	280
V10	12x25	0	280
V11	12x25	0	280



Relação do aço	AÇO	N	DIAM (mm)	QUANT (Barras)	UNIT (cm)	C.TOTAL (cm)	PESO + 10% (kg)
CA60	1	5.0	367	62	22754		
CA50	2	8.0	4	389	1556		
		8.0	4	411	1644		
		8.0	2	701	1402		
		8.0	2	723	1446		
		8.0	2	203	406		
		8.0	2	225	450		
		8.0	4	507	2028		
		8.0	4	528	2116		
		8.0	2	204	408		
		8.0	2	228	452		
		8.0	2	557	1114		
		8.0	2	574	1148		
		8.0	2	208	416		
		8.0	2	231	462		
		8.0	2	1147	2294		
		8.0	2	1169	2338		
		8.0	2	114	228		
		8.0	2	136	272		

ESTADO DE GOIÁS
SECRETARIA DE ESTADO DE DESENVOLVIMENTO SOCIAL

CASE
CENTRO DE ATENDIMENTO SOCIOEDUCATIVO
REFORMA / ADPTAÇÃO COLÉGIO ESTADUAL CHICO MENDES

ENDEREÇO: Rua Cristino, Qd. 23-A, Lt. Área 6, S/Nº, Conjunto Riviera, Goiânia - GO

ÁREA DO TERRENO: 4162.73M² | ÁREA PERÍMETRO: 2.278.70M² | ÁREA CONSTRUIDA: 984.32M² | ÁREA A DEMOLIR: 0M² | ÁREA A CONSTRUIR: 0M² | ÁREA PAVIMENTADA: 584.35M²

PROPRIETÁRIO: SECRETARIA DA EDUCAÇÃO DO ESTADO DE GOIÁS
AUTOR DO PROJETO: ENOZ CIVIL LUCAS BUENO ALMEIDA - CREA 101508106/DGO
AUTOR DO PROJETO: ENOZ CIVIL MARCEL JORGE A. BORGES - CREA 101683040/DGO

ESTRUTURA

TIPO DE PROJETO: _____

ASSUNTO: _____

DATA: JUN/2022 | ESCALA: INDICADA | REVISÃO: 000 | NOME DO ARQUIVO: _____

REV. DATA | DESCRIÇÃO | VISITO

DET. ESTRUTURA. ARMAÇÃO - QUANTIA. ADM. PL. E REVISAS

2/3

FOLHA